

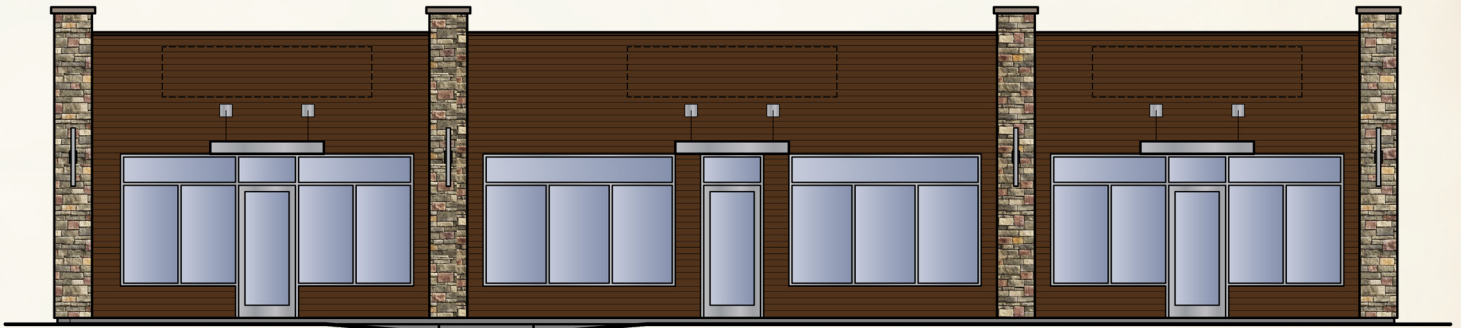
# 1909 CENTER BUILDING

1909 VETERANS MEMORIAL PARKWAY • LAFAYETTE

Call Randy Truitt  
at 765-404-7584  
Randy@TruVantRealty.com

**TRUVANT**  
REALTY

EASY ACCESS OF U.S. 52 AND CLOSE TO I-65



## NOW LEASING RETAIL OR OFFICE SPACE

- Fronting Veterans Memorial Parkway
- Daily Traffic Count – 17,700 Cars (2012 Data)
- Spaces will be delivered as a Cold Shell
- Lease Rate is \$18/psft NNN
- TIA at \$35/psft

### SPACE AVAILABLE

**Suite 120:** 1,952 Gross SFT

